



CREATING SOLUTION

COMPANY PROFILE

Sumbartec

OFFSHORE | SHIPBUILDING | CONSTRUCTION

“Sumbartec was established in 2017. This business started with a strong desire to build high quality products in steel fabrication”



Table of Contents

■ Preface	1
■ Brief History	2
■ The Journey of Sumbartec	3
■ Vision, Mission and Company Values	4
■ Organizational Chart	5
■ Company Capabilities	6
■ QSHE Policy	7
■ Project Portfolio	8
■ Our Clients and Partner	18



Preface

Sumbartec is a steel construction company mainly engaged in the fabrication of steel pipes, pipe rack, module structure, storage tank, pressure vessels, and other matters related to oil and gas / offshore infrastructure works.

Our commitment to fabrication and construction is to provide quality products, always in accordance with customer specifications and international standards. With the support of human resources who are experts in their fields, supportive technology and healthy and independent finance, this company can grow and develop.

To carry out various fabrication and construction works properly in every business activity, we always rely on work discipline, follow all procedures, and develop professionalism to win the trust of our partners and customers. We are ready to listen to every wish and input from various parties to achieve common goals, so that a balanced and harmonious cooperation is established.

We are committed to prioritising occupational safety and health in all our operations and to controlling all environmental impacts, both environmental and social. We would like to thank you for your support and input in improving the performance of the business.

On behalf of Sumbartec

Kevin Darwan
Managing Director

Brief History



The establishment of Sumbartec was a continuation of Muaro Prima Utama. A decade later, since its establishment, the company has been awarded numerous projects in the oil and gas industry such as process module fabrication, e-house fabrication, pipe spool fabrication, fan cooler fabrication, pressure vessel fabrication, etc.



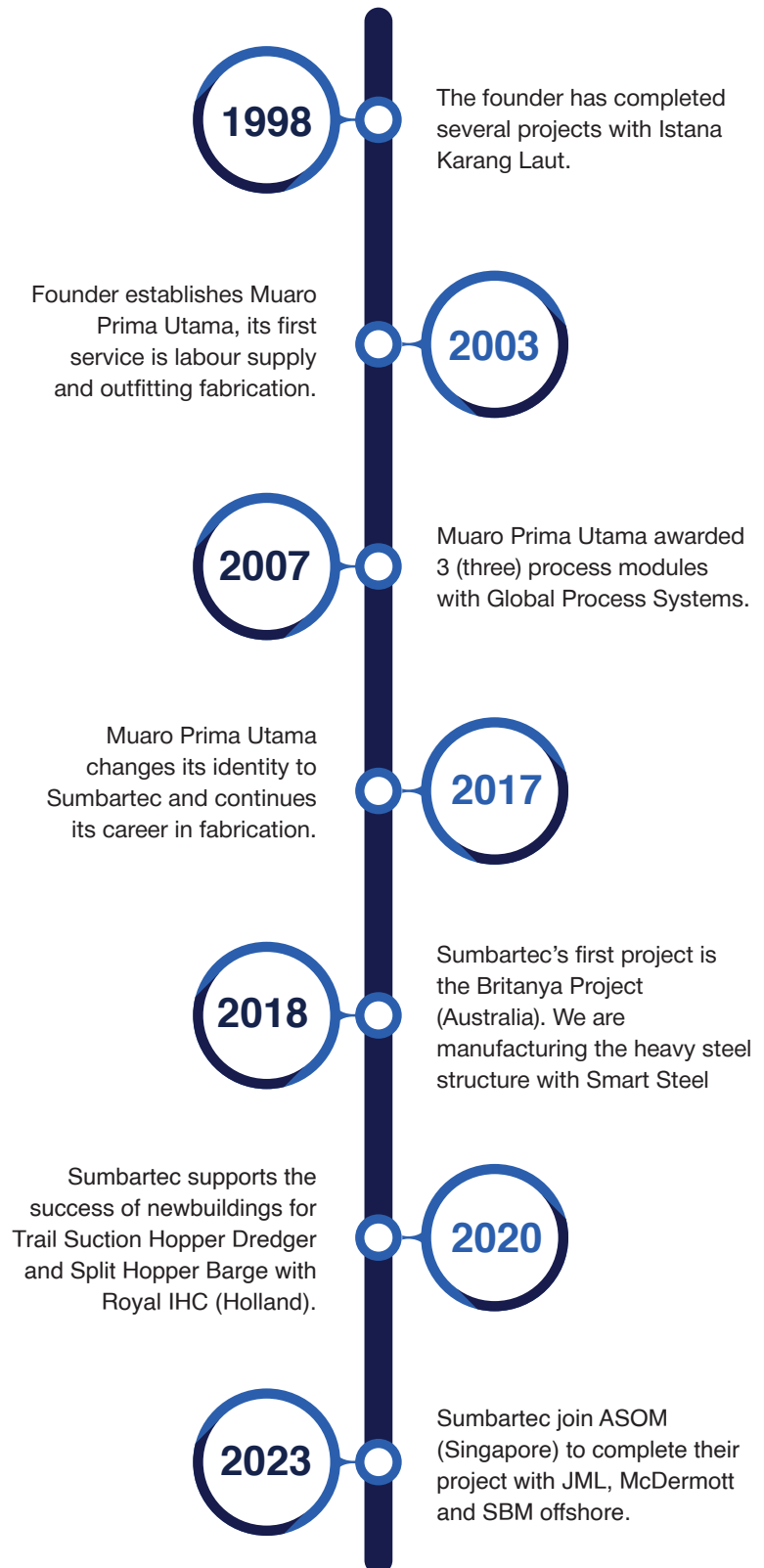
New Company Logo Identity

Sumbartec

Since 2024, Sumbartec has officially launched a new company identity, from its logo to its company values. Since the first quarter of 2023, Sumbartec has managed and completed 5 projects with zero LTI. This positive value was the precursor to the change of Sumbartec's identity from the dominant red colour to blue, associated with the successful restructuring and transformation that has been carried out since 2018.

With a new spirit, Sumbartec will continue to strive to promote the progress of its partners, using all its assets to be a source of mutual benefit.

The Journey of Sumbartec



Vision & Mission



Vision

Become one of the best and quality in planning and project management, engineering, fabrication, construction, and commissioning

Mission

- Discipline in carrying out work procedures.
- Right one time
- Increase productivity by choosing certified and qualified engineer and workers

Company Values



We have 7-S that will be the key to the success of our objectives



Ocean wave are a symbol of stability, because they can exist largely unchanged for centuries. Waves are constantly in motion, rising and falling, and this can remind us that life is also constantly changing. We hope that Sumbartec can adapt to new situations, embrace changes and find strenght



Safety

Committed to building and maintaining safety behavior in the workplace



Strong

Has a strong knowledge and understanding



Strategic

Work with a strategic plan and a strategic sequence



Solid

Engange everyone in the achievement of goals through clarity, consistency, resilience and ethical behavior



Skills

Committed to the development and provision of a workforce with good skills



Sustainable

Ensure the long-term viability of the organisation by balancing economic, social, and environmental concerns

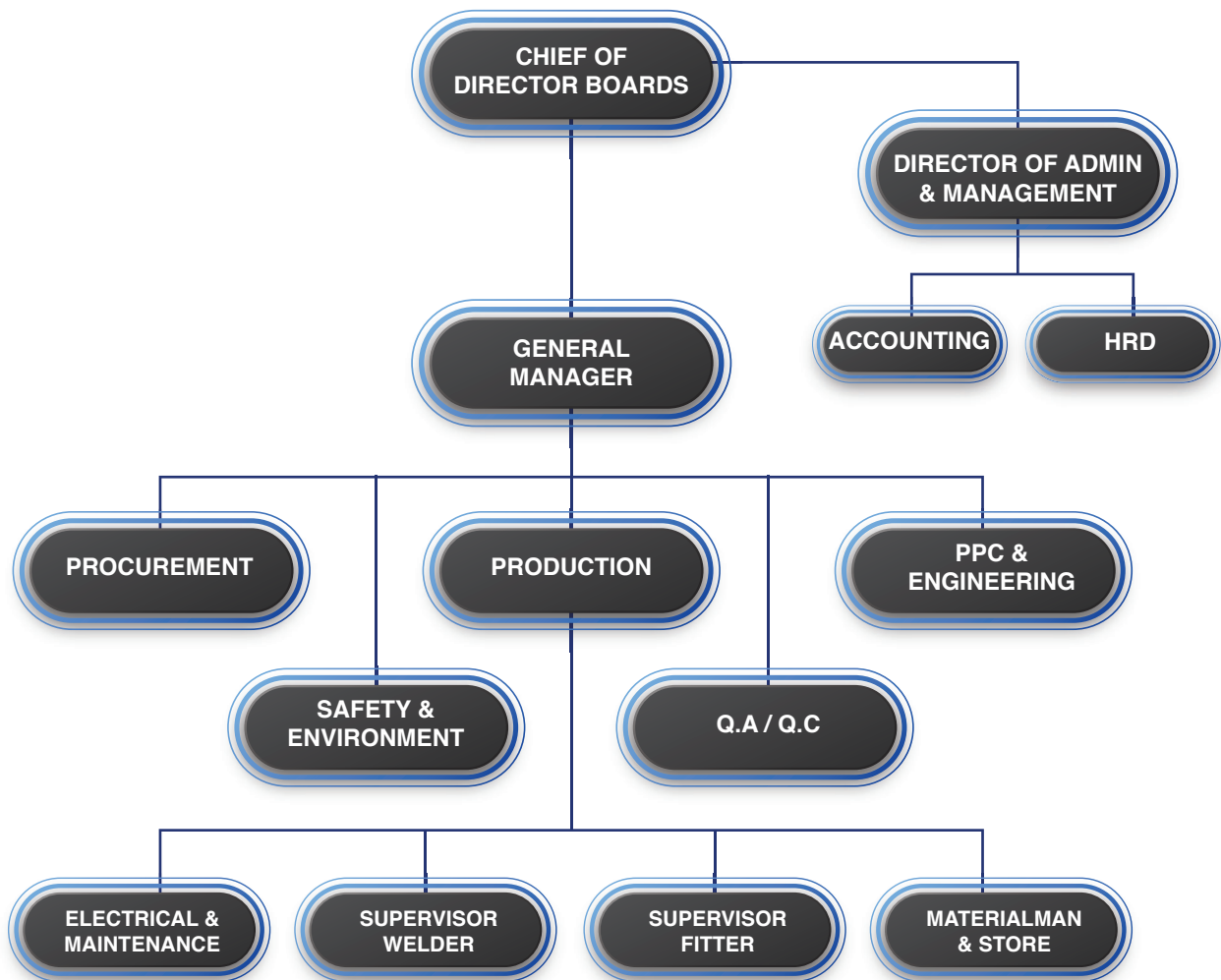


Solver

Solve any problem smartly and safely



Organizational Chart



Company Capabilities



Planning and Engineering

We provide full engineering services from conceptual design to implementation. The qualified engineers work with us to provide solutions for our clients.



Fabrication and Management

We manage and provide a skilled fabrication service for individual components, sub-assemblies, trial fit through to erection.



Testing and Commissioning

We provide a qualified and certified commissioning team to ensure that the project runs safely from mechanical completion to pre-commissioning on completion.



QSHS POLICY



Quality Policy

We are committed to meet and exceed our clients requirements in the design, construction and management of steel fabrication while encouraging continual improvements and ensuring prompt response to client's feedback.



Environmental Policy

We are committed to minimize the environmental impact in our business operations by:

- Ensuring our operations and processes comply with relevant environmental legislations and main-con / clients regulation
- Ensuring continual improvement in preventing pollution
- Educating our workforce on environmental protections
- Saving energy and conserving resources through recycling and waste education activities.



Safe and Healthy Policy

We are committed to the continuous improvement of our safety and health practices to ensure a safe and healthy work environment for all employees and our clients in all our business operations.

In Pursuing this commitment to prevent and eliminate work related accidents and occupational illnesses we will:

- Comply with the applicable safety and health legislation and other requirement
- Set and monitor measurable objectives and targets to continuously improve our performance
- Provide relevant safety and healthy awareness to all employees
- Implement effective systems for eliminating or controlling risks where possible



Project Portfolio

Project Summary

YEAR	Project / Job Description	Client	Location
1998	Fabrication Vertical Vessel NSO	Mobil Oil Project	Batam
1999	Modification Separator Skid	Tricom Project	North Aceh
1999	Manpower Supply- Welder And Fitters	Istana Karang Laut (Mobil Oil)	Natuna Sea
1999	Manpower Supply - Welder And Fitters	Gema Sembrown (Conoco Project)	Natuna Sea
1999	Manpower Supply - Welder, Fitters, and E & I	Rotary Engineering (Conoco Project)	Singapore
2003	Manpower Supply - Scaffolder, Rigger, Carpenter	Pelangi Mitra Offshore.Pte.Ltd	Batam
2003	Manpower Supply - Welder and Fitters	Istana Karang Laut (McDermott)	Batam
2003	Manpower Supply - General Worker	M-I Indonesia	Batam
2003	Manpower Supply - Welder, Fitters, Painters	SMOE Indonesia	Batam
2003	Manpower Supply - Welder and Fitters	Transocean. Inc	Batam
2004	Scaffolding Equipment Supply	SMOE Indonesia	Batam
2004	Manpower Supply - Construction Discipline	SMOE Indonesia	Batam
2004	Manpower Supply - Construction Discipline	Heat Exchangers Indonesia	Batam
2004	Manpower Supply - Construction & Electrical	Ninda Pratama Vriesindo (Saipem)	Batam
2005	Manpower Supply - Construction Discipline	Heat Exchangers Indonesia	Batam
2006	Manpower Supply - Piping Discipline	Rotary Engineering	Batam
2006	Manpower Supply - Structure Discipline	Profab Indonesia	Batam
2006	Manpower Supply - Structure Jack-up Discipline	PECS Offshore. Pte.Ltd	Batam
2007	Fabrication & Erection Process Module	Global Process Systems	Batam
2007	Manpower Supply - Piping Discipline	Rotary Engineering	Batam
2008	Manpower Supply - Piping Discipline	Technics Offshore Jaya	Batam
2008	Fabrication E-House Petropod	Rotary Engineering	Batam
2008	Manpower Supply - Welder and Fitters	Global Process Systems	Batam
2008	Manpower Supply - Construction Discipline	Istana Karang Laut	Jambi
2009	Manpower Supply - Blaster and Painters	Heat Exchangers Indonesia	Batam
2009	Equipment Supply - Welding Machine Rental	Heat Exchangers Indonesia	Batam
2009	Manpower Supply - Construction Discipline	HEI (North Belut Project)	Batam
2010	Manpower Supply - Piping Discipline	Rotary Engineering (Exxon Mobil Project)	Batam
2011	Fabrication and Assembly Structure Air Cooler	Heat Exchangers Indonesia	Batam
2011	Fabrication Pressure Vesel and Reel Drum	Heat Exchangers Indonesia (Technap Project)	Batam
2012	Fabrication Structure Module 3P-HP	VME Process	Batam
2013	Manpower Supply - Blaster and Painters	SMOE Indonesia	Batam
2014	Fabrication and Erection FPSO Package	Wasco (Ten Development Project)	Batam
2014	Fabrication and Erection Piping ISBL	Eco Green	Batam
2018	Repair ACHE Bundle and Header Box	EPCM SDJ Heat Exchangers	Batam
2018	New Vam and Vam Top X-Over	Prowell Energy	Jakarta
2019	Fabrication and Erection Piping at Shipbuilding	Pax Ocean	Batam
2019	Manpower Supply - QC Inspector and E & I	Royal IHC	Batam
2020	Manpower Supply - Commissioning Discipline	Royal IHC	Batam
2020	Fabrication Block Shipbuilding 1400 MT	Royal IHC	Batam
2021	Manpower Supply - Newbuilding Split Hopper	Newcrest Australia	Batam
2022	Manpower Supply - Site Inspector	IV-Offshore	Batam
2023	Storage Tank Fabrication (8 units)	Wood - JML Singapore	Batam
2023	Outfitting (Handrail, Platform, Staircase)	Medco	Batam
2024	Stern Wedges, Fender, Skid Beam	Medco	Batam
2024	Lifeboat Platform (FPSO Saxi and Mondo)	SBM Offshore - ASOM	Batam

Project Portfolio ▶ Project Highlight



Fabrication and Erection Bridge for OXY Qatar

Location : SMOE Yard, Batam | Client : OXY, 2003



Fabrication Handrail

Location : SMOE Yard, Batam | Client : ERHA Nigeria Deep Water, 2004



Fabrication Pipe Spool

Location : Rotary Engineering Yard, Batam | Client : Tate and Lyle Singapore, 2006

Project Portfolio ▶ Project Highlight



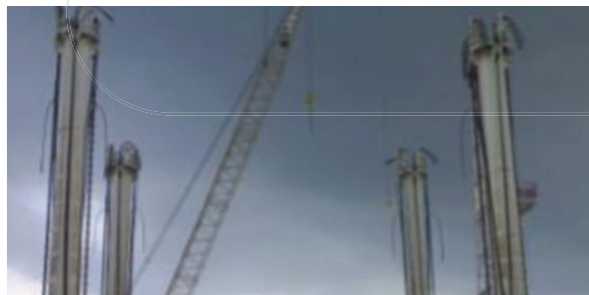
Fabrication and Trial Fit Loading Arm

Location : Rotary Engineering Yard, Batam | Client : AMCO Wheaton, 2006



Fabrication Pipe Spool

Location : Rotary Engineering Yard, Batam | Client : Universal Terminal Pte Ltd, 2006



Fabrication and Installation Leg Rig

Location : APECS Offshore Yard, Batam | Client : Swiber, 2006

Project Portfolio ▶ Project Highlight



Fabrication and Erection HP Compression Module

Location : GPS Yard, Batam | Client : Petrobras, 2007



Fabrication and Erection E-House

Location : Rotary Engineering Yard, Batam | Client : Powell, 2008



Fabrication and Modification Pipe Spool (Duplex)

Location : Heat Exchangers Indonesia Yard, Batam | Client : Conoco Phillips, 2009

Project Portfolio ▶ Project Highlight



Fabrication Air Cooler

Location : Heat Exchangers Indonesia Yard, Batam | Client : Tripatra, 2011



Fabrication Pressure Vessel

Location : Heat Exchangers Indonesia Yard, Batam | Client : KNM Process Systems, 2011



Fabrication Reel Drum

Location : Heat Exchangers Indonesia Yard, Batam | Client : Technip, 2011

Project Portfolio ▶ Project Highlight



Fabrication HP Separation Modulet

Location : VME Yard, Batam | Client : Mitsubishi / MODEC, 2012



Fabrication and Erection Pipe Spool (CS X65)

Location : VME Yard, Batam | Client : Mitsubishi / MODEC, 2012



Labour Supply for Australia Pacific LNG

Location : SMOE Yard, Batam | Client : Bechtel, 2013

Project Portfolio ▶ Project Highlight



Fabrication FPSO Package Module

Location : Wasco Yard, Batam | Client : TEN Development, 2013



Fabrication Pipe Spool ISBL / OSBL

Location : Eco Green Yard, Batam | Client : Eco Green, 2013



Fabrication Exhaust for MV Jumbo Maritime

Location : Tjokro Yard, Batam | Client : Jumbo Maritime (Holland), 2015

Project Portfolio ▶ Project Highlight



Fabrication Heavy Structure for Eagle and Britanya Project

Location : Smart Steel Yard, Batam | Client : Smart Steel Solution, 2018



Fabrication Plate, Stud and Bolt

Location : Smart Steel Yard, Batam | Client : Makuri, 2018



Repair ACHE Bundle and Header Box

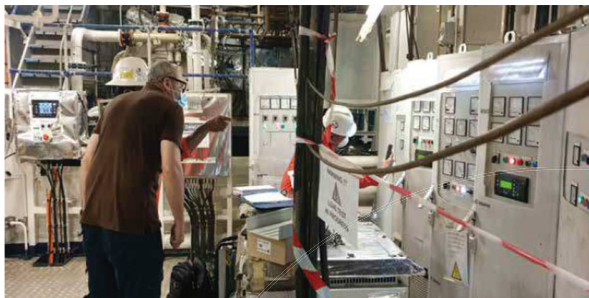
Location : EPCM Yard, Batam | Client : Pertamina, 2018

Project Portfolio ▶ Project Highlight



Pipe Spool Fabrication for TSHD and SHU

Location : Pax Ocean Yard, Batam | Client : Royal IHC (Holland), 2020



Commissioning for TSHD and SHU

Location : Pax Ocean Yard, Batam | Client : Royal IHC (Holland), 2021



Fabrication Storage Tank (8 Units)

Location : Nexus Yard, Batam | Client : Wood - JML, 2022

Project Portfolio ▶ Project Highlight



Fabrication Stern Wedges, Fender and Skid Beam

Location : Nexus Yard, Batam | Client : McDermott, 2023



Fabrication Lifeboat Platform (FPSO Saxi and Mondo)

Location : Nexus Yard, Batam | Client : SBM Offshore, 2024

Our Clients



Our Partner






PT Sumbartec Jaya Lievindo

Head Office :

Ruko Taman Kota Block E-12 Batam,
Kapulauan Riau, Indonesia

 +62 778 7436 490

 inquiry@sumbartec.com

 www.sumbartec.com